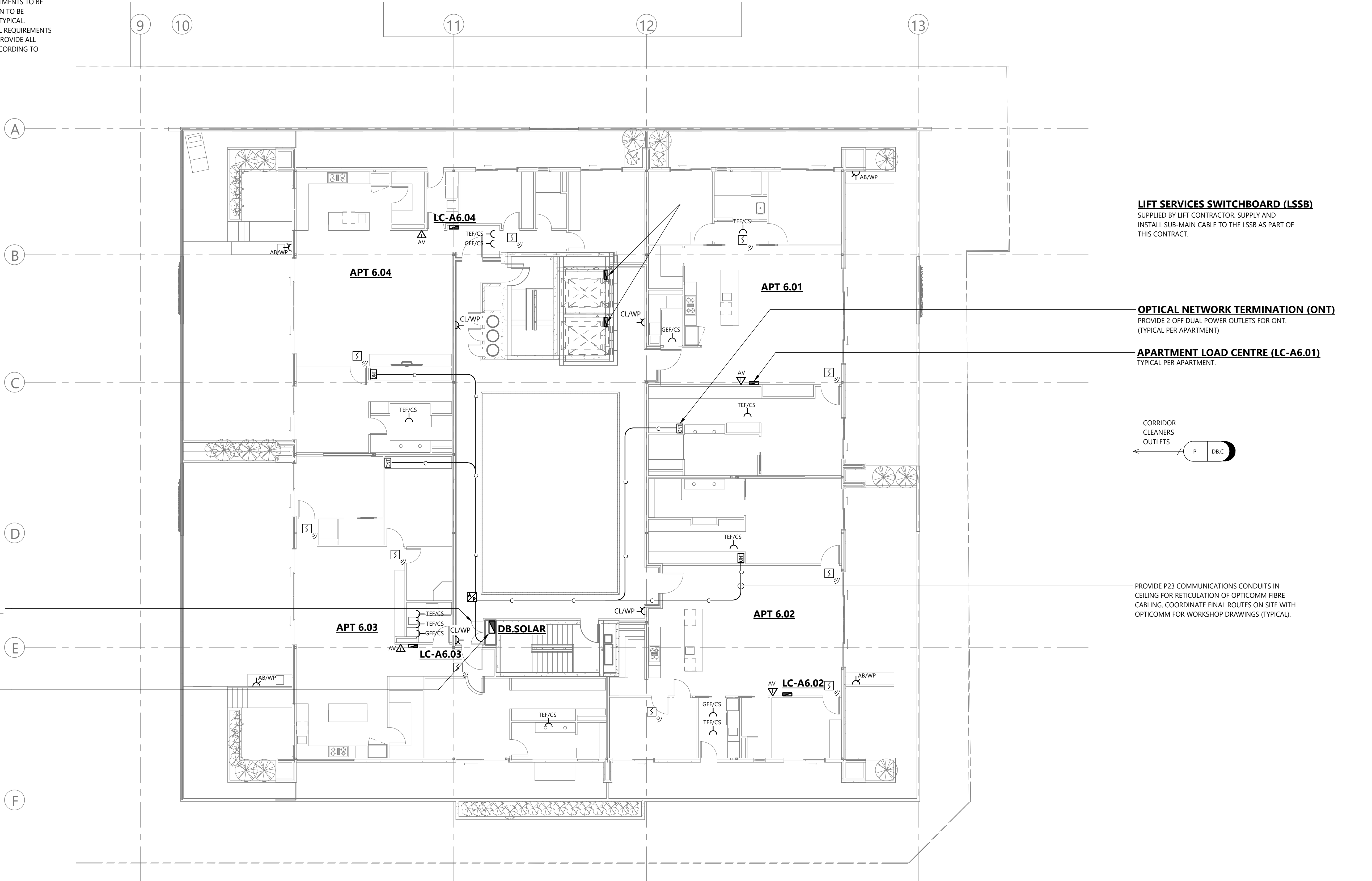


NOTES:

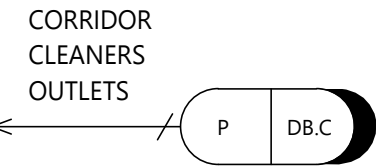
1. [REMOVED]
2. BALCONY OUTLETS AND EXHAUST FANS WITHIN APARTMENTS TO BE SUPPLIED FROM LOCAL APARTMENT LOAD CENTRE. FAN TO BE SWITCHED FROM 2ND POLE OF LOCAL LIGHT SWITCH. TYPICAL.
3. REFER TO ARCHITECTURAL DOCUMENTATION FOR FULL REQUIREMENTS OF ELECTRICAL INSTALLATION WITHIN APARTMENTS. PROVIDE ALL REQUIRED MATERIALS AND FIXTURES AND INSTALL ACCORDING TO ARCHITECT SET-OUT (TYPICAL).



LIFT SERVICES SWITCHBOARD (LSSB)
SUPPLIED BY LIFT CONTRACTOR. SUPPLY AND
INSTALL SUB-MAIN CABLE TO THE LSSB AS PART OF
THIS CONTRACT.

OPTICAL NETWORK TERMINATION (ONT)
PROVIDE 2 OFF DUAL POWER OUTLETS FOR ONT.
(TYPICAL PER APARTMENT)

APARTMENT LOAD CENTRE (LC-A6.01)
TYPICAL PER APARTMENT.



PROVIDE P23 COMMUNICATIONS CONDUITS IN
CEILING FOR RETICULATION OF OPTICOMM FIBRE
CABLING. COORDINATE FINAL ROUTES ON SITE WITH
OPTICOMM FOR WORKSHOP DRAWINGS (TYPICAL).

**ELECTRICAL AND COMMUNICATIONS
RISER CUPBOARD**

- CONTAINS:
- BUILDING OPTICOMM DISTRIBUTION
 - ELECTRICAL METER PANELS
 - SECURITY/MATV/INTERCOM EQUIPMENT

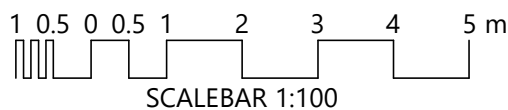
DISTRIBUTION BOARD (DB.SOLAR)

FINAL SIZE AND REQUIREMENTS TO BE DETERMINED
BY ELECTRICAL CONTRACTOR TO SUIT PV SOLAR
ARRAY AND AVAILABLE RISER SPACE.

REV	DESCRIPTION	DATE	CHKD
B	CONSTRUCTION ISSUE	24.03.20	MS
A	CONSTRUCTION ISSUE	14.02.20	MS

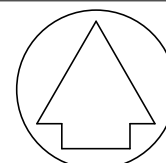
© Copyright Lucid Consulting Australia 24/03/2020 2:51:41 PM

FOR CONSTRUCTION



LUCID
CONSULTING AUSTRALIA
Level 3/169, Pirie St Adelaide SA 5000
Phone: (08) 8407 9700
Email: adelaide@lucidconsulting.com.au

PROJECT
HYDE PARK PLACE
248 UNLEY ROAD, HYDE PARK
ELECTRICAL SERVICES
DRAWING
**6TH FLOOR POWER, COMMUNICATIONS AND
SECURITY ARRANGEMENT**



NOT FOR CONSTRUCTION PURPOSES UNLESS STAMPED FOR
CONSTRUCTION. VERIFY DIMENSIONS AND LEVELS ON SITE
BEFORE SETTING OUT. DO NOT SCALE. REFER TO FIGURED
DIMENSIONS - IN mm UNLESS OTHERWISE STATED.

Scale	Design: MD	No. in Set	Date
1 : 100	Drawn: PY	12 of 24	FEB 2020
Orig. Size	Drawing no.	Revision	
A1	LCE14462-E207	B	